



## **E-MONITORING AND E-REPORTING WORKSHOP**

Pacific Islands Forum Fisheries Agency Headquarters, 31 March – 1 April 2014  
Honiara, SOLOMON ISLANDS

---

**Satlink ECOLOG System**  
**R&D for long-term Sustainable Tuna Fishery**

---

**1 April 2014**

**Egor Zaborovskly**



# ***Satlink ECOLOG System***

## ***R&D for long-term Sustainable Tuna Fishery***

**Egor Zaborovskiy, Satlink WCPO**  
**Honiara, March 2014**

# Satlink Introduction

---



- Maritime, Land Mobile & Aeronautical solutions provider
  - Satellite communications equipment
  - Distributor and development of own product
  - Direct development or through sub-contracts
  - Embedded SW & HW
  - Client/Server development & Web Development
- Private held company established in 1992
  - Offices in Spain, Ecuador, Seychelles and Solomon Islands.
- Main areas are
  - Fishing industry
  - Defence, Governmental,
  - Media, NGOs, Industry
  - Airtime





# Company Overview

## Presence





MARITIME

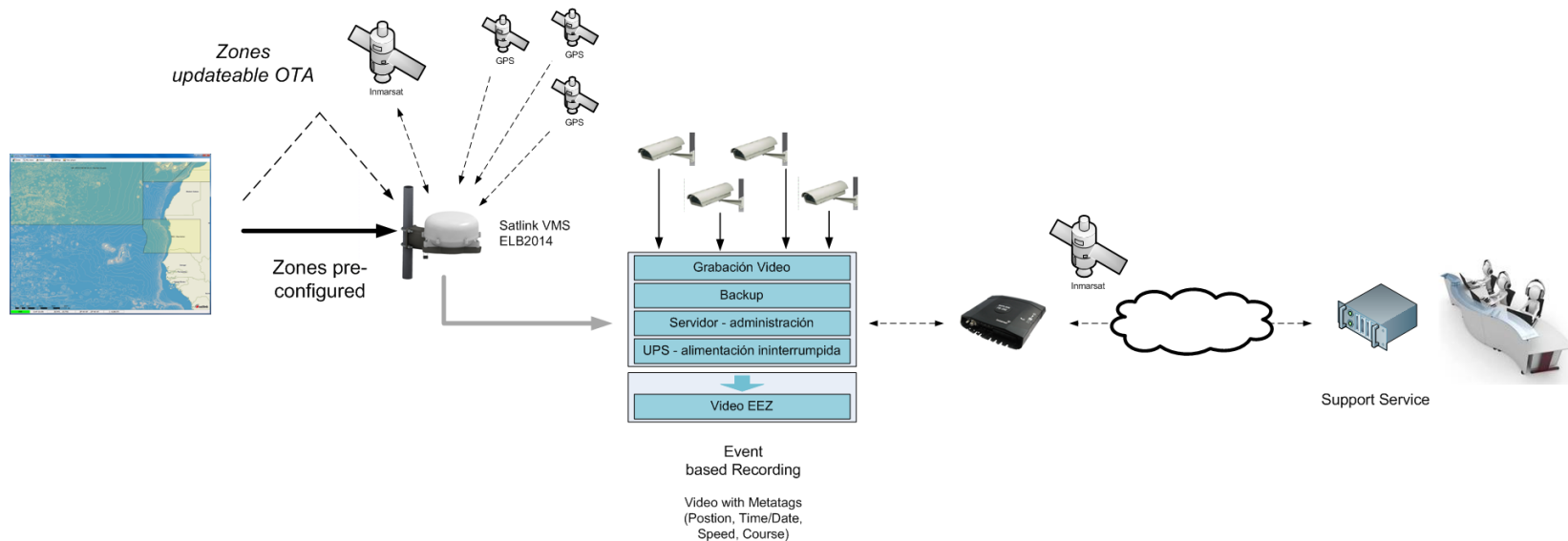


# Satlink Seatube Electronic Observer Onboard



# Seatube – General Description

- Seatube is the brand name for Satlink's recording and real-time onboard video monitoring system
- Seatube is a solution that uses the latest available technologies
- Seatube consists of:
  - Onboard Video Recording System
  - Fishing Trip Analysis Software for land analysis
  - Via satellite System Status Reporting and Monitoring Service



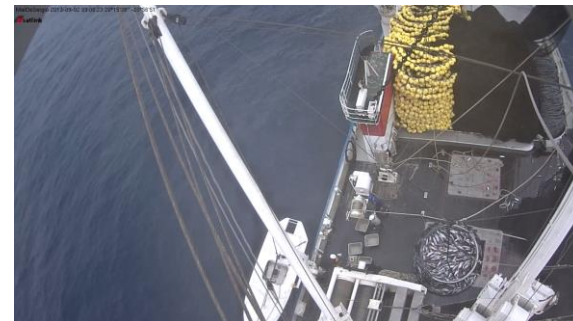
## Seatube – Onboard Video Server: Recording Operation

---

- Satlink Seatube recording system can be configured for:

- 24/7
- Sunrise / Sunset
- Sensor interaction

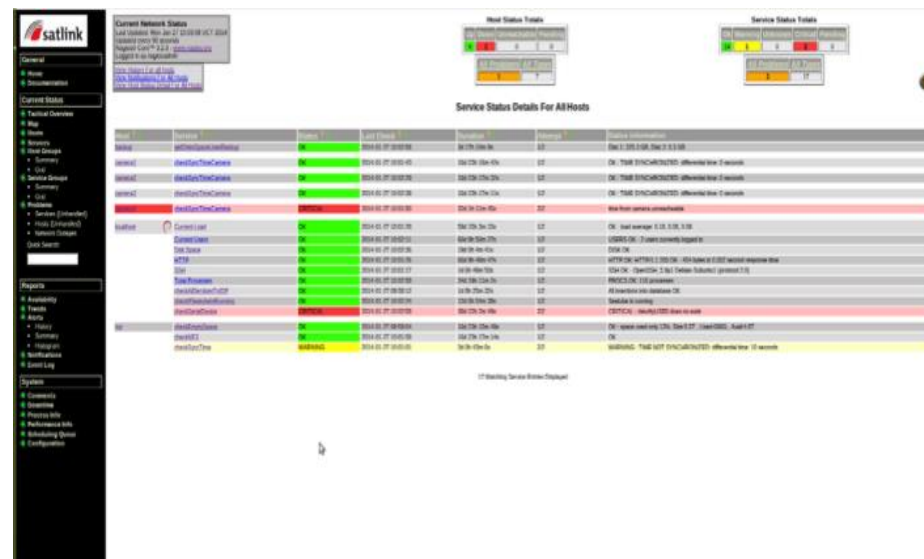
- Satlink Seatube recordings are divided into 10 minutes videos clips, each with
  - Date and Time of recording
  - Date and Time of current GPS position
  - Current GPS position, speed and course
  - Other metadata collected from VMS sources and sensors, like vessel details recorded at installation.
- Videos are recorded onboard at 720p @ 24FPS (HDTV quality)





## Seatube – Onboard Management PC: Alert System

- In case of an unexpected incidence the System Status Reporting and Monitoring Service sends a report to Satlink Secure Server
- Satlink IT will then assess the severity of the incidence immediately 24/7
- Soft issues are resolved remotely without external intervention
- This provides a intuitive health status system on-board the vessel







# Satlink SeaTube Satlink View Manager Demo

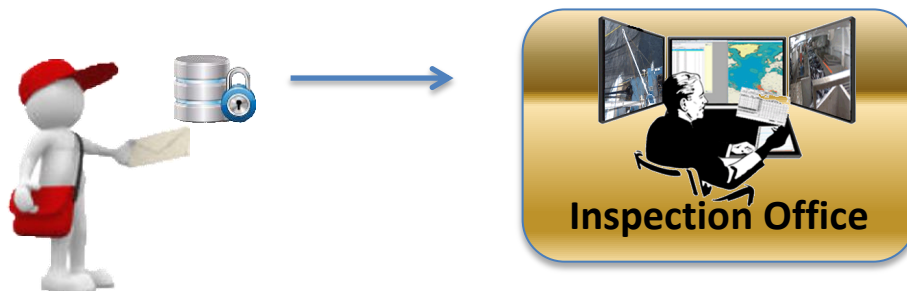
Example of SeaTube video from a purse seine vessel  
Video recorded from sunrise to sunset  
No sensors used  
Many days without activity



## Seatube – Retrieving Videos From Vessel

---

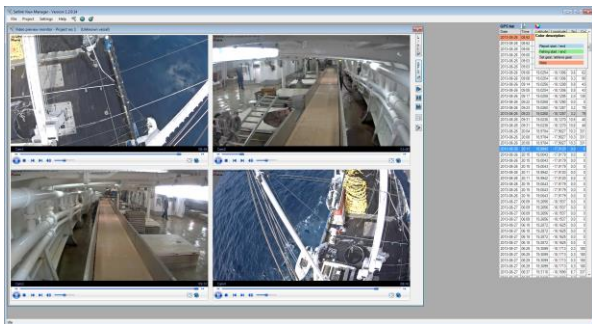
- The videos to be inspected are located on the BACKUP recording device
- The discs drives has to be replaced with new discs and the BACKUP installed in the Observer office



- All videos are stored encrypted and only person with correct authorization can decrypt the discs
- All videos are stored by date on the discs in clips of 10 minutes
- Satlink View Manager can now be used to inspect the videos

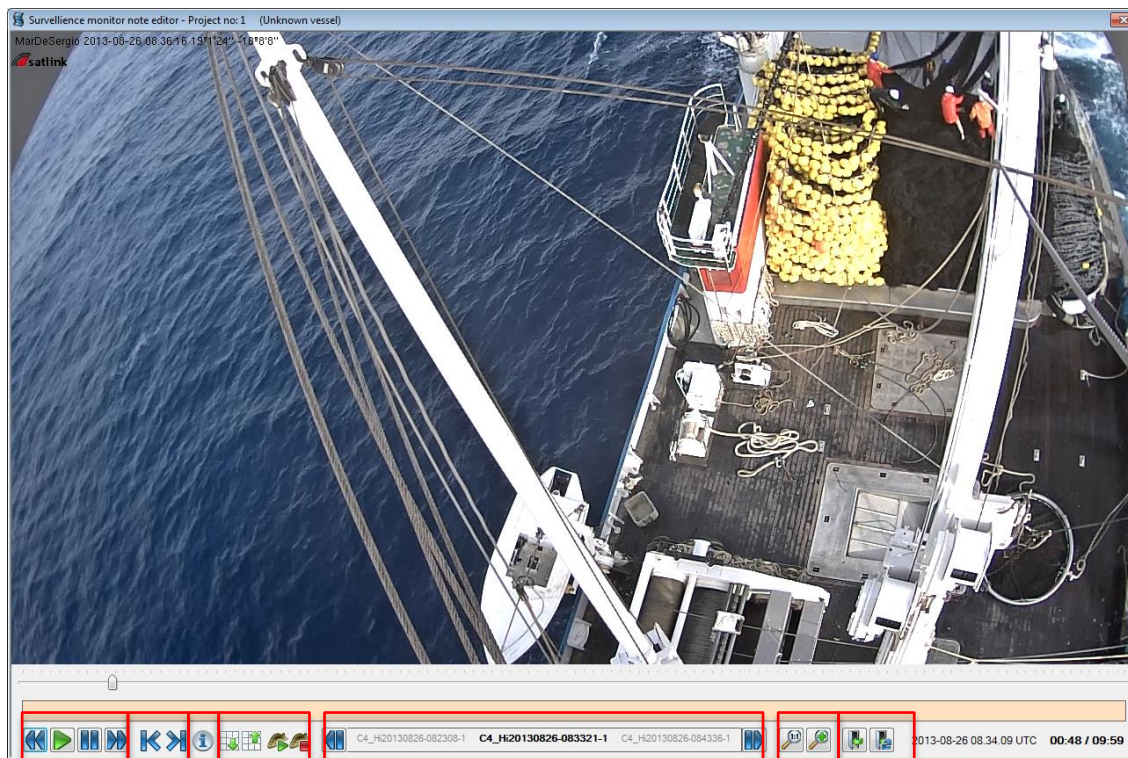
## Seatube – View Manager

- View Manager is a group of tools integrated into one solution
  - World Map with default or customized EEZ (Satlink Zone Designer allows for user definable zones)
  - Video Player that shows all videos simultaneous
  - Tag, Note and vessel information editor for detailed inspection of the videos
  - Inspection Report creation that joins all notes and vessel information into one report
- Inspector will extract Trip into separate Projects
- Inspector will play, comment and analyze videos retrieved from the vessel
- GPS data extracted from metatags inside the video(s) is used to show the vessels position, course and speed for the time of the video
- Video selections directly from marine chart, data selections or video file



# Seatube – View Manager

- Edit mode allows for full control of video, adding notes to video, adding tags gear user defined activities and generate report



Play  
control

Tags (User  
defined text)

Add note

Video  
control

Zoom/Pan

Leave HD  
mode and  
Sync or Not  
other  
camera to  
this moment

# Seatube – View Manager

- Report format currently shows
  - Name of vessel
  - Vessel details
  - Data and Time
  - Lat and Long for notes and tags
  - Activity by adding tags with user defined text
  - Activity by using written text or by including optional photo
  - Speed and course with position
  - Inspection title
  - Owner name
  - Watermark from image extracted
  - Reference to actual video file

## Satlink View Manager Report


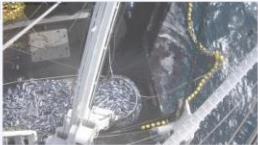

Página 1 de 1

### Inspection report

JHE // Y // TST // DOMO // 18SEP

Project no: 62 Vessel: xxx External marking: xxx CFR no: 2013-11-27 20:08:11  
 Project date interval: 2013-09-18 - 2013-09-18  
 Date/time filter: All dates/times  
 Zone filter: All zones  
 Speed filter: All speeds  
 Image filter: Showing date/time watermark and showing mini image

### Report

Date (file)	UTC time (file)	Lat (dec)	Long (dec)	Speed	Course	File
2013-09-18	09:40:14	20,2094	-18,6959	0,3	0	Y:\C3_Hi\20130918AM\C3_Hi20130918-093653-1379497013.mp4
<Vesselname> 2013-09-18 09:42:48 20°12'34" -18°41'45" (Camera watermark)				Normal Camera showing sorting of skipjack tuna		
2013-09-18	09:40:59	20,2094	-18,6959	0	270	Y:\C1_Hi\20130918AM\C1_Hi20130918-093828-1379497108.mp4
<Vesselname> 2013-09-18 09:44:25 20°12'34" -18°41'45" (Camera watermark)				Mast Camera showing unloading of fish		
2013-09-18	09:42:44					Y:\C2_Hi\20130918AM\C2_Hi20130918-094207-1379497013.mp4
<Vesselname> 2013-09-18 09:46:31 20°12'35" -18°41'47" (Camera watermark)				Dome Camera showing sorting of skipjack tuna		
2013-09-18	09:43:55	20,2094	-18,6959	0	270	Y:\C4_Hi\20130918AM\C4_Hi20130918-093913-1379497153.mp4
<Vesselname> 2013-09-18 09:46:31 20°12'35" -18°41'47" (Camera watermark)				Other mast mounted Camera showing unloading on deck of tuna		





[www.satlink.es](http://www.satlink.es)